

# 844 R REVERSIBLE

for sliding gates  
with max weight of 1.000 kg



## ■ Reversibility in all situations

The FAAC 844 R REV screw gearmotor is reversible: when no power is supplied to the motor, the sliding leaf can always be moved manually. An electric lock must be installed to maintain the gate in closed position.

## ■ Total safety

The special twin-disk anti-crushing clutch, in oil bath, enables thrust adjustment from 0 to 68 daN.

## ■ Long life

Constant, complete oil-bath lubrication of mechanical components plus assembly in a high resistance pressure-cast aluminium body ensure a very long life.

## ■ FAAC means reliability

Thanks to the reliability of FAAC technology, maintenance is minimised.



■ Cover



■ Release device with customised key



■ Screw cover

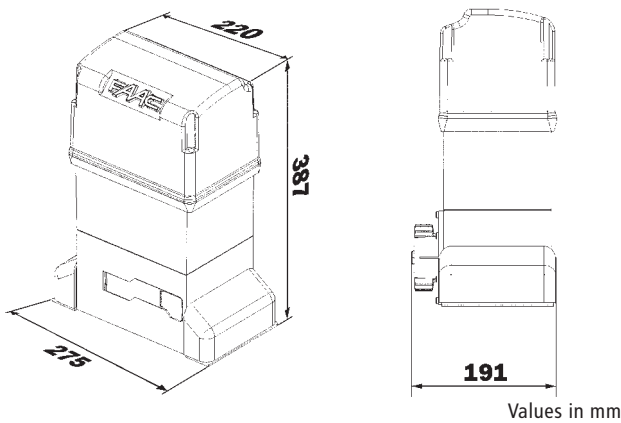


■ Base in pressure cast aluminium with cathoporesis treatment



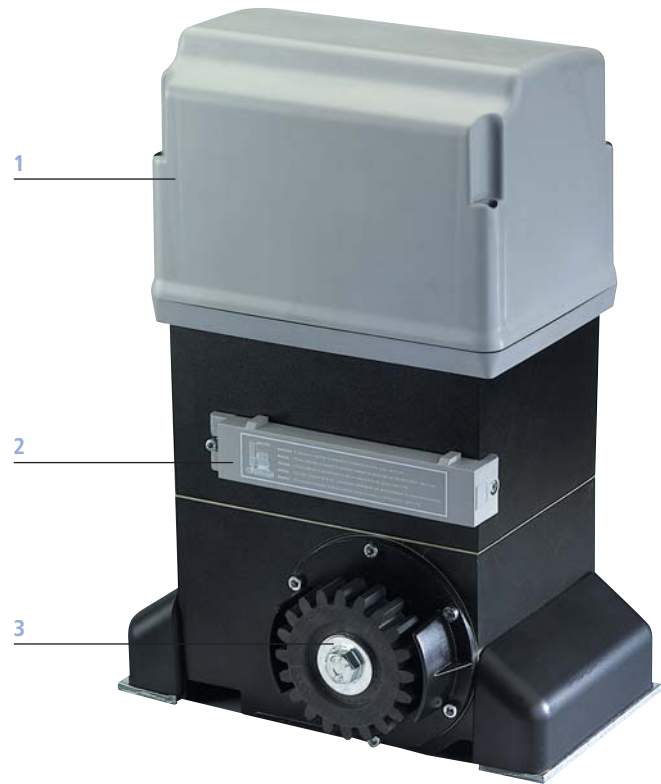
- 1 Cover
- 2 Inductive limit-switch
- 3 Pinion

## DIMENSIONS



**Specifications of 578 D control board**  
(for far applications)

Transformer	Integrated
Power supply	230 Vac (+6%-10%) 50 Hz
Absorbed power	10 W
Motor max. load	1000 W
Accessories max. load	0,5 A
Operating ambient temperature	-20°C ÷ +55°C
Fuses	2
Function logics	Automatic/"Stepped" automatic/ Semi-automatic/Safety devices/Semi- automatic B / Dead-man C / "Stepped" semi-automatic / Mixed B/C logic
Work time	Programmable (from 0 to 4 min)
Pause time	Programmable (from 0 to 4 min)
Thrust force	Adjustable over 50 levels
Terminal board inputs	Open - Partially Open - Opening safety devices - Closing safety devi- ces - Stop - Edge - Power supply + earth - Opening and closing limit- switches - Encoder
Terminal board outputs	Flashing lamp - Motor - 24 Vdc acces- sories power supply - 24Vdc indicator- light - Timed output - Electric lock command - "traffic lights" - Fail safe
Rapid connector	5-pin card connection for Minidec, Decoder or RP receivers
Programming	Nr. 3 keys(+,-,F) and display, "basic" or "advanced" mode
"Basic" mode programmable functions	Function logic - Pause time - Thrust force - Opening-closing direction
"Advanced" mode programmable functions	Torque at initial thrust - Braking - Fail safe - Pre-flashing - Indicator-light/ Timed output/Electric lock or "traffic lights" command - Opening and clos- ing safety devices logic - Encoder/ Anti-crushing sensitivity - Deceleration - Partial opening time - Worktime - Assistance request - Cycle counter
Status indication	Display
Plastic enclosures compatibility	E - L - LM Mod



Technical specifications	844 R REVERSIBLE
Power supply	230 Vac (+6% -10%) 50 (60) Hz
Absorbed power	550 W
Absorbed current	2,5 A
Traction and thrust force	0÷68 daN (Z12)
Motor rotation speed	750 rpm
Reduction ratio	3:29
Operating ambient temperature	-20°C ÷ +55°C
Weight with oil	15 kg
Protection class	IP 44
Type of oil	FAAC OIL XD 220
Gate speed	11,6 m/min. (Z12)
Thermal protection on motor winding	140°C
Limit-switch	Inductive with plate
Clutch	Twin disk in oil-bath
Protective treatment	Cataphoresis

Model	Use		Control board
	Max weight (kg)	Use frequency (cycles/hour)	
844 R Z 12 REVERSIBLE	1.000	70	Not included